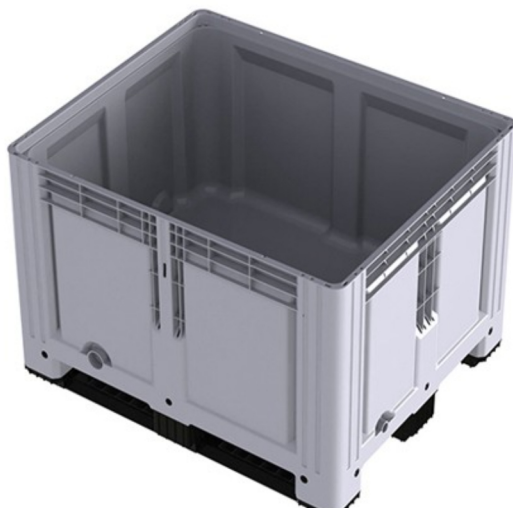




ECO PLASTIC PALLET BOX APRIGID1210-C3
RIGID CLOSED 3-RUNNER LARGE VOLUME CONTAINER

CE+

RIGID



PE -30°/40°C



Technical Data

EXTERNAL DIMENSIONS	INTERNAL DIMENSIONS	STACKED HEIGHT	FOLDED HEIGHT	WEIGHT	VOLUME	STATIC LOAD	DYNAMIC LOAD
1.200x1.000x789mm	1.120x919x610mm	764mm	-mm	38.94kg	676L.	4.500kg	1.000kg

Logistic Data

20"	40"	40" HC	45"	TAULINER	MEGA	JUMBO
40	86	86	104	104	104	120

Advantages

- ✓ Contact with food
- ✓ Smooth internal surface for enhanced cleaning
- ✓ Long-lasting
- ✓ Large load volume
- ✓ Suitable for automatic handling systems

Options

- ★ Customizable colour
- ★ Silkscreen logo
- ★ Engraved logo
- ★ Label mount
- ★ Other heights available
- ★ Manual tap

Iconography



ELING WHARF, ELING LANE, TOTTON, SOUTHAMPTON, SO40 4TE
Tel: 0800 0288 655 Fax: (023) 8066 3362
www.associated-pallets.co.uk www.plasticpalletsuk.co.uk
Email: info@associated-pallets.co.uk